



31.10.2018

Prístroj c.
Výkon tlumicu hluku

DIMsilencer 6.0

Upozornení	Prodejce	Zákazník
	/	/

Název produktu	Oznacit	[m3/h] Prútok	[Pa] Pokles tlaku	Lw pred Tlumic dB(A)	Lw po Tlumic dB(A)
TUNE-S 100 50 900 500 1850	VZT1_SUP	3201	24	81	40
TUNE-S 200 100 900 500 1500	VZT1_ETA	3201	17	73	38
TUNE-S 100 50 600 500 1250	VZT1_ODA	3201	44	81	47
TUNE-S 100 50 600 500 1250	VZT1_EHA	3201	44	81	47
TUNE-S 100 50 900 450 1250	VZT3_EHA	2658	17	81	46
TUNE-S 100 80 900 450 1000	VZT3_ODA	2658	6	72	45
TUNE-S 100 50 900 450 1850	VZT3_SUP	2658	20	80	39
TUNE-S 100 50 900 450 1250	VZT3_ETA	2658	17	70	39
SLBGU 315 900 100	VZT2_SUP	550	4	70	39
SLCU 315 600 100	VZT2_ETA	550	0	43	35
SLCBU 315 900 100	VZT2_EHA	550	4	67	42

Název produktu

Data tlumicu

TUNE-S 100 50 900 500 1850



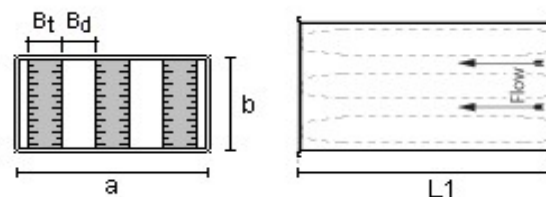
Prístroj c.
Výkon tlumicu hluku

DIMsilencer 6.0

Název produktu

Data tlumicu

TUNE-S 100 50 900 500 1850



Šírka, a	900
Výška, b	500
kulisa/mezera Bt/Bd	100/50
Délka (L1):	1850

Popis

TUNE has a conventional design with dimensions that not exceed the corresponding connection dimensions. The silencer can be manufactured in all standard duct sizes. Design Has an outer sheet casing of trapezoidal corrugated sheet metal for stability and reduced risk of natural oscillation. Is designed for low air resistance with baffle combinations that attenuate particularly low-frequency noise well. The type of insulation material has been developed to provide good noise properties, low weight and to be cleanable. Meets the requirements of air tightness class C and pressure class 2 according to EN 1507:2006. Is equipped with joining profile type RJFP. Tools for dimensioning and planning To calculate the silencer, you can use our IT-program DIMsilencer, where baffle distance, width and height can be optimized for the best performance.

Oznacit

VZT1_SUP

Umístění

Prívod

Popis Lw pred, stitek

VZT1

Prutok [m³/h]

3201

Pokles tla [Pa]

24

Lw pred Tlumeric

Útlum

Generování hluku

Lw po Tlumeric

Hz	63	125	250	500	1k	2k	4k	8k		dB(A)
Lw pred Tlumeric	44	54	69	71	77	77	71	64	dB	81
Útlum	5	12	26	40	50	50	50	39	dB	
Generování hluku	39	34	32	33	33	26	21	17	dB	36
Lw po Tlumeric	42	43	43	35	34	30	24	26	dB	40



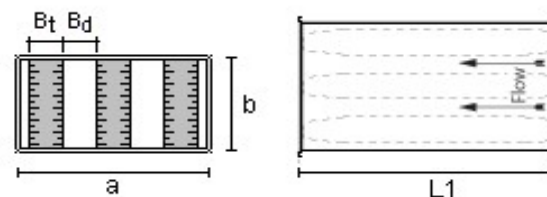
Prístroj c.
Výkon tlumicu hluku

DIMsilencer 6.0

Název produktu

Data tlumicu

TUNE-S 200 100 900 500 1500



Šírka, a	900
Výška, b	500
kulisa/mezera Bt/Bd	200/100
Délka (L1):	1500

Popis

TUNE has a conventional design with dimensions that not exceed the corresponding connection dimensions. The silencer can be manufactured in all standard duct sizes. Design Has an outer sheet casing of trapezoidal corrugated sheet metal for stability and reduced risk of natural oscillation. Is designed for low air resistance with baffle combinations that attenuate particularly low-frequency noise well. The type of insulation material has been developed to provide good noise properties, low weight and to be cleanable. Meets the requirements of air tightness class C and pressure class 2 according to EN 1507:2006. Is equipped with joining profile type RJFP. Tools for dimensioning and planning To calculate the silencer, you can use our IT-program DIMsilencer, where baffle distance, width and height can be optimized for the best performance.

Oznacit

VZT1_ETA

Umístění

Sání

Popis Lw pred, stitek

VZT1

Prutok [m3/h]

3201

Pokles tla [Pa]

17

Lw pred Tlumeric

Útlum

Generování hluku

Lw po Tlumeric

Hz	63	125	250	500	1k	2k	4k	8k		dB(A)
Lw pred Tlumeric	42	51	62	61	68	69	61	53	dB	73
Útlum	4	12	21	45	50	50	31	19	dB	
Generování hluku	41	32	30	30	23	18	22	21	dB	31
Lw po Tlumeric	43	40	42	30	24	22	31	34	dB	38



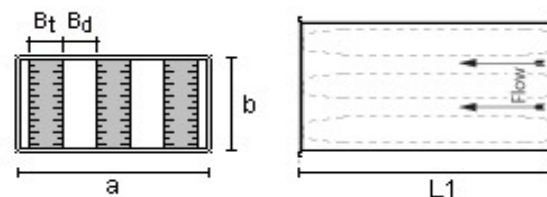
Prístroj c.
Výkon tlumicu hluku

DIMsilencer 6.0

Název produktu

Data tlumicu

TUNE-S 100 50 600 500 1250



Šírka, a	600
Výška, b	500
kulisa/mezera Bt/Bd	100/50
Délka (L1):	1250

Popis

TUNE has a conventional design with dimensions that not exceed the corresponding connection dimensions. The silencer can be manufactured in all standard duct sizes. Design Has an outer sheet casing of trapezoidal corrugated sheet metal for stability and reduced risk of natural oscillation. Is designed for low air resistance with baffle combinations that attenuate particularly low-frequency noise well. The type of insulation material has been developed to provide good noise properties, low weight and to be cleanable. Meets the requirements of air tightness class C and pressure class 2 according to EN 1507:2006. Is equipped with joining profile type RJFP. Tools for dimensioning and planning To calculate the silencer, you can use our IT-program DIMsilencer, where baffle distance, width and height can be optimized for the best performance.

Oznacit

VZT1_ODA

Umístění

Prívod

Popis Lw pred, stitek

VZT1

Prutok [m³/h]

3201

Pokles tla [Pa]

44

Lw pred Tlumeric

Útlum

Generování hluku

Lw po Tlumeric

Hz	63	125	250	500	1k	2k	4k	8k		dB(A)
Lw pred Tlumeric	44	54	69	71	77	77	71	64	dB	81
Útlum	3	8	18	29	50	50	44	30	dB	
Generování hluku	45	39	37	37	39	33	29	24	dB	42
Lw po Tlumeric	46	47	51	43	39	34	31	35	dB	47



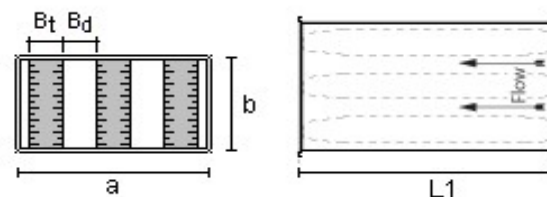
Prístroj c.
Výkon tlumicu hluku

DIMsilencer 6.0

Název produktu

Data tlumicu

TUNE-S 100 50 600 500 1250



Šírka, a	600
Výška, b	500
kulisa/mezera Bt/Bd	100/50
Délka (L1):	1250

Popis

TUNE has a conventional design with dimensions that not exceed the corresponding connection dimensions. The silencer can be manufactured in all standard duct sizes. Design Has an outer sheet casing of trapezoidal corrugated sheet metal for stability and reduced risk of natural oscillation. Is designed for low air resistance with baffle combinations that attenuate particularly low-frequency noise well. The type of insulation material has been developed to provide good noise properties, low weight and to be cleanable. Meets the requirements of air tightness class C and pressure class 2 according to EN 1507:2006. Is equipped with joining profile type RJFP. Tools for dimensioning and planning To calculate the silencer, you can use our IT-program DIMsilencer, where baffle distance, width and height can be optimized for the best performance.

Oznacit

VZT1_EHA

Umístění

Prívod

Popis Lw pred, stitek

VZT1

Prutok [m³/h]

3201

Pokles tla [Pa]

44

Lw pred Tlumeric

Útlum

Generování hluku

Lw po Tlumeric

Hz	63	125	250	500	1k	2k	4k	8k		dB(A)
Lw pred Tlumeric	44	54	69	71	77	77	71	64	dB	81
Útlum	3	8	18	29	50	50	44	30	dB	
Generování hluku	45	39	37	37	39	33	29	24	dB	42
Lw po Tlumeric	46	47	51	43	39	34	31	35	dB	47



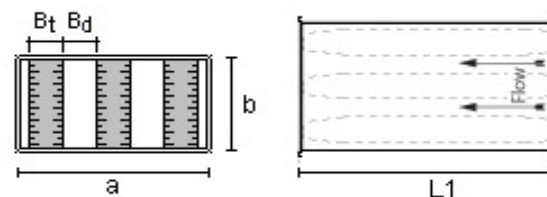
Prístroj c.
Výkon tlumicu hluku

DIMsilencer 6.0

Název produktu

Data tlumicu

TUNE-S 100 50 900 450 1250



Šírka, a	900
Výška, b	450
kulisa/mezera Bt/Bd	100/50
Délka (L1):	1250

Popis

TUNE has a conventional design with dimensions that not exceed the corresponding connection dimensions. The silencer can be manufactured in all standard duct sizes. Design Has an outer sheet casing of trapezoidal corrugated sheet metal for stability and reduced risk of natural oscillation. Is designed for low air resistance with baffle combinations that attenuate particularly low-frequency noise well. The type of insulation material has been developed to provide good noise properties, low weight and to be cleanable. Meets the requirements of air tightness class C and pressure class 2 according to EN 1507:2006. Is equipped with joining profile type RJFP. Tools for dimensioning and planning To calculate the silencer, you can use our IT-program DIMsilencer, where baffle distance, width and height can be optimized for the best performance.

Oznacit

VZT3_EHA

Umístění

Výfuk

Popis Lw pred, stitek

VZT3_EHA

Prutok [m³/h]

2658

Pokles tla [Pa]

17

Lw pred Tlumeric

Útlum

Generování hluku

Lw po Tlumeric

Hz	63	125	250	500	1k	2k	4k	8k		dB(A)
Lw pred Tlumeric	45	55	69	71	77	77	71	64	dB	81
Útlum	3	8	18	29	50	50	44	30	dB	
Generování hluku	38	33	31	32	33	25	20	16	dB	36
Lw po Tlumeric	43	47	51	43	34	29	28	34	dB	46



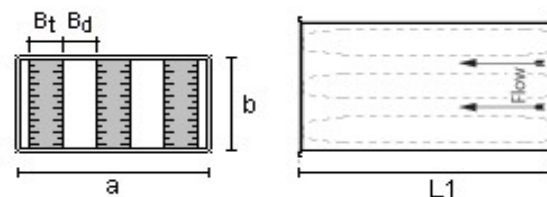
Prístroj c.
Výkon tlumicu hluku

DIMsilencer 6.0

Název produktu

Data tlumicu

TUNE-S 100 80 900 450 1000



Šírka, a	900
Výška, b	450
kulisa/mezera Bt/Bd	100/80
Délka (L1):	1000

Popis

TUNE has a conventional design with dimensions that not exceed the corresponding connection dimensions. The silencer can be manufactured in all standard duct sizes. Design Has an outer sheet casing of trapezoidal corrugated sheet metal for stability and reduced risk of natural oscillation. Is designed for low air resistance with baffle combinations that attenuate particularly low-frequency noise well. The type of insulation material has been developed to provide good noise properties, low weight and to be cleanable. Meets the requirements of air tightness class C and pressure class 2 according to EN 1507:2006. Is equipped with joining profile type RJFP. Tools for dimensioning and planning To calculate the silencer, you can use our IT-program DIMsilencer, where baffle distance, width and height can be optimized for the best performance.

Oznacit

VZT3_ODA

Umístění

Sání

Popis Lw pred, stitek

VZT3

Prutok [m³/h]

2658

Pokles tla [Pa]

6

Lw pred Tlumeric

Útlum

Generování hluku

Lw po Tlumeric

Hz	63	125	250	500	1k	2k	4k	8k		dB(A)
Lw pred Tlumeric	41	51	61	59	67	68	59	51	dB	72
Útlum	2	4	10	19	37	35	23	16	dB	
Generování hluku	35	29	27	28	27	19	14	10	dB	30
Lw po Tlumeric	40	47	51	40	32	33	36	35	dB	45



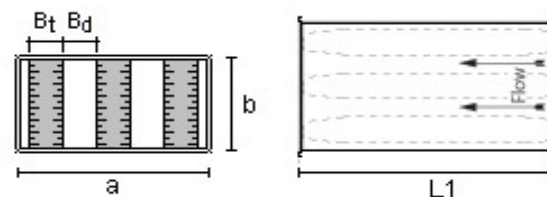
Prístroj c.
Výkon tlumicu hluku

DIMsilencer 6.0

Název produktu

Data tlumicu

TUNE-S 100 50 900 450 1850



Šírka, a	900
Výška, b	450
kulisa/mezera Bt/Bd	100/50
Délka (L1):	1850

Popis

TUNE has a conventional design with dimensions that not exceed the corresponding connection dimensions. The silencer can be manufactured in all standard duct sizes. Design Has an outer sheet casing of trapezoidal corrugated sheet metal for stability and reduced risk of natural oscillation. Is designed for low air resistance with baffle combinations that attenuate particularly low-frequency noise well. The type of insulation material has been developed to provide good noise properties, low weight and to be cleanable. Meets the requirements of air tightness class C and pressure class 2 according to EN 1507:2006. Is equipped with joining profile type RJFP. Tools for dimensioning and planning To calculate the silencer, you can use our IT-program DIMsilencer, where baffle distance, width and height can be optimized for the best performance.

Oznacit

VZT3_SUP

Umístění

Prívod

Popis Lw pred, stitek

VZT3

Prutok [m³/h]

2658

Pokles tla [Pa]

20

Lw pred Tlumeric

Útlum

Generování hluku

Lw po Tlumeric

Hz	63	125	250	500	1k	2k	4k	8k		dB(A)
Lw pred Tlumeric	43	54	68	69	76	76	69	62	dB	80
Útlum	5	12	26	40	50	50	50	39	dB	
Generování hluku	38	33	31	32	33	25	20	16	dB	36
Lw po Tlumeric	41	43	42	34	34	29	23	24	dB	39



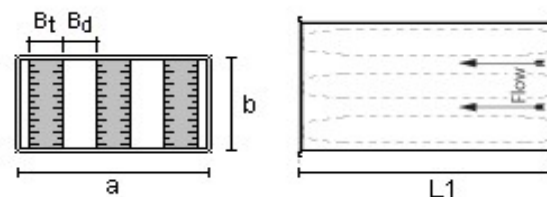
Prístroj c.
Výkon tlumicu hluku

DIMsilencer 6.0

Název produktu

Data tlumicu

TUNE-S 100 50 900 450 1250



Šírka, a	900
Výška, b	450
kulisa/mezera Bt/Bd	100/50
Délka (L1):	1250

Popis

TUNE has a conventional design with dimensions that not exceed the corresponding connection dimensions. The silencer can be manufactured in all standard duct sizes. Design Has an outer sheet casing of trapezoidal corrugated sheet metal for stability and reduced risk of natural oscillation. Is designed for low air resistance with baffle combinations that attenuate particularly low-frequency noise well. The type of insulation material has been developed to provide good noise properties, low weight and to be cleanable. Meets the requirements of air tightness class C and pressure class 2 according to EN 1507:2006. Is equipped with joining profile type RJFP. Tools for dimensioning and planning To calculate the silencer, you can use our IT-program DIMsilencer, where baffle distance, width and height can be optimized for the best performance.

Oznacit

VZT3_ETA

Umístění

Odvod

Popis Lw pred, stitek

VZT3

Prutok [m3/h]

2658

Pokles tla [Pa]

17

Lw pred Tlumeric

Útlum

Generování hluku

Lw po Tlumeric

Hz	63	125	250	500	1k	2k	4k	8k		dB(A)
Lw pred Tlumeric	43	51	61	59	66	66	59	50	dB	70
Útlum	3	8	18	29	50	50	44	30	dB	
Generování hluku	38	33	31	32	33	25	20	16	dB	36
Lw po Tlumeric	42	43	44	34	33	26	21	22	dB	39



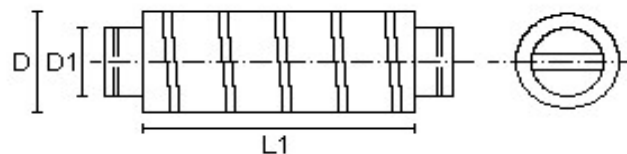
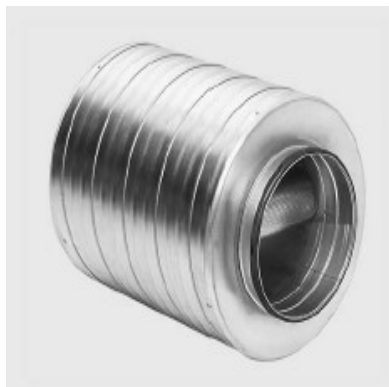
Prístroj c.
Výkon tlumicu hluku

DIMsilencer 6.0

Název produktu

Data tlumicu

SLBGU 315 900 100



Vnitřní průměr: 315

Max. vnější rozměr 510

Délka (L1): 900

Popis

Tlumic hluku který splňuje požární třídy bez ochranné vzdálenosti: EI 15, E 60
Požární třídy s ochrannou vzdáleností od: nouzového úniku pro osoby: 3 kW/m²
EI 60 při vzdálenosti 50 mm (Ø 315) EI 30 při vzdálenosti 50 mm (Ø 400800) EI 60
při vzdálenosti 500 mm (Ø 400800) horlavých materiálů: 10 kW/m² EI 60 při
vzdálenosti 5 mm 30 kW/m² EI 60 při vzdálenosti 5 mm Tloušťka izolace 100
mm. Dodáváno s tlumicem o tloušťce 100 mm. Zaručuje velmi dobré tlumení v
celém rozsahu. Používá se tam, kde je zapotřebí velmi dobrého tlumení a SLCU
100 není dostatečný. Zejména vhodné pro velké rozměry.

Oznacit

VZT2_SUP

Umístění

Prívod

Popis Lw pred, stitek

VZT2

Prutok [m³/h]

550

Pokles tla [Pa]

4

Lw pred Tlumic

Útlum

Generování hluku

Lw po Tlumic

Hz	63	125	250	500	1k	2k	4k	8k		dB(A)
Lw pred Tlumic	48	58	64	66	67	64	56	50	dB	70
Útlum	6	9	20	34	39	44	34	22	dB	
Generování hluku	28	22	18	11	6	-10	-17	-27	dB	14
Lw po Tlumic	42	49	44	32	28	20	22	28	dB	39



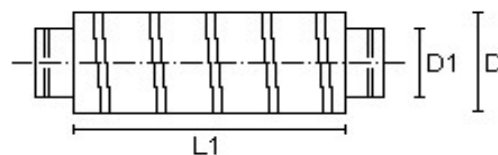
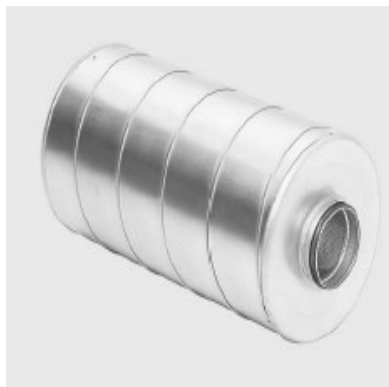
Prístroj c.
Výkon tlumicu hluku

DIMsilencer 6.0

Název produktu

Data tlumicu

SLCU 315 600 100



Vnitřní průměr: 315

Max. vnější rozměr 510

Délka (L1): 600

Popis

Tlumic hluku který splňuje požární třídy bez ochranné vzdálenosti: EI 60, E 120
Požární třídy s ochrannou vzdáleností od: nouzového úniku pro osoby: 3 kW/m² EI 120 při vzdálenosti 50 mm horlavých materiálu: 10 kW/m² EI 120 při vzdálenosti 5 mm 30 kW/m² EI 120 při vzdálenosti 5 mm Tloušťka izolace 100 mm. Dobré tlumení ve frekvencích 125 a 250 Hz.

Oznacit

VZT2_ETA

Umístění

Odvod

Popis Lw před, stítek

VZT2

Průtok [m³/h]

550

Pokles tl. [Pa]

0

Lw před Tlumic

Útlum

Generování hluku

Lw po Tlumic

Hz	63	125	250	500	1k	2k	4k	8k		dB(A)
Lw před Tlumic	34	46	46	42	36	33	25	25	dB	43
Útlum	1	4	7	9	12	10	5	6	dB	
Generování hluku	17	11	7	-2	-9	-28	-36	-48	dB	2
Lw po Tlumic	33	42	39	33	24	23	20	19	dB	35



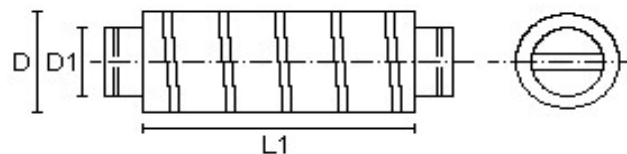
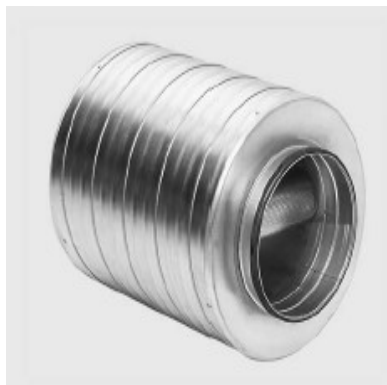
Prístroj c.
Výkon tlumicu hluku

DIMSilencer 6.0

Název produktu

Data tlumicu

SLCBU 315 900 100



Vnitřní průměr: 315

Max. vnější rozměr 510

Délka (L1): 900

Popis

Fire classes without protective distance: EI 60, E 120 Fire classes with protective distance to (evacuation person): 3 kW/m² EI 120 at distance 50 mm combustible materials: 10 kW/m² EI 120 at distance 5 mm 30 kW/m² EI 120 at distance 5 mm Insulation thickness 100 mm. Provided with a 100 mm thick baffle. This gives very good attenuation across the entire range. Used where very good attenuation is needed and SLU 100 is not enough. Specially suitable for large dimensions. Tested according to ISO 7235 standard.

Oznacit

VZT2_EHA

Umístění

Výfuk

Popis Lw pred, stitek

VZT2

Průtok [m³/h]

550

Pokles tl. [Pa]

4

Lw pred Tlumič

Útlum

Generování hluku

Lw po Tlumič

Hz	63	125	250	500	1k	2k	4k	8k		dB(A)
Lw pred Tlumič	46	57	61	63	64	61	52	44	dB	67
Útlum	5	7	16	23	30	38	32	22	dB	
Generování hluku	28	22	18	11	6	-10	-17	-27	dB	14
Lw po Tlumič	41	50	45	40	34	23	20	22	dB	42